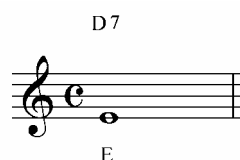


## Chapter 8: The Left Hand

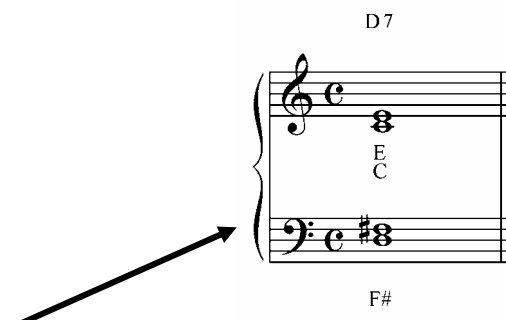
*You can use more than one finger in the left hand!*

We've discussed that when the melody note falls between the 7<sup>th</sup> and 3<sup>rd</sup> of a voicing one chord, you take the 3<sup>rd</sup> down the octave.



To explain in more detail: If you use Nate's Three Finger Piano Method to find the D7 chord, you'll see that the top note (F#) is above the melody note (E). So you'll want to take the top note of the chord (F#) down an octave, so that the melody note (E) is on top.

As an option, you could play some of the notes in the left hand.



This second staff is usually played by the left hand. You don't need to know how to read it to use this book. Just know this means left hand!