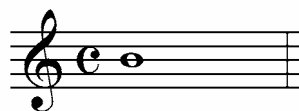


## The Lines of the Treble Clef

*Two different worlds of black and white.*

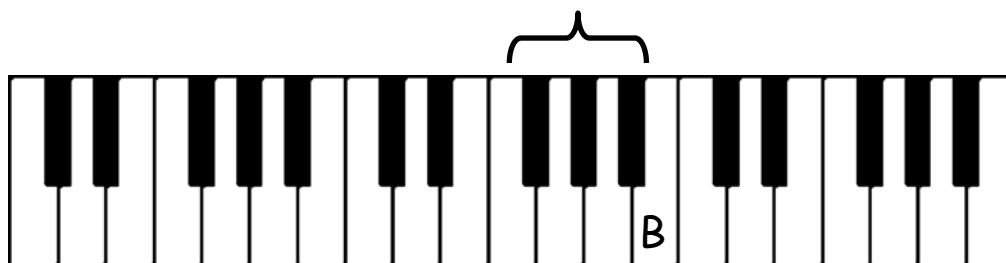
The treble clef is the best place to get started with music reading, because it's the most commonly used clef. The treble clef is five thin black lines with an elaborate, swirly and somewhat hard-to-recognize capital letter G. Other "ledger lines" will be added above and below to add additional notes, but most music will stay within the five lines of the treble clef.

Here is a treble clef with the note B added. The note B sits on the middle line of the treble clef.



We'll start with the note B, because it sits in the middle of the staff.

On the piano, the note B is just to the right of the three black keys:

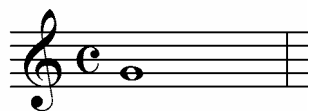


In fact, everywhere on the piano where you see the three black keys, the key just to the right is the note B (only in different **octaves**).

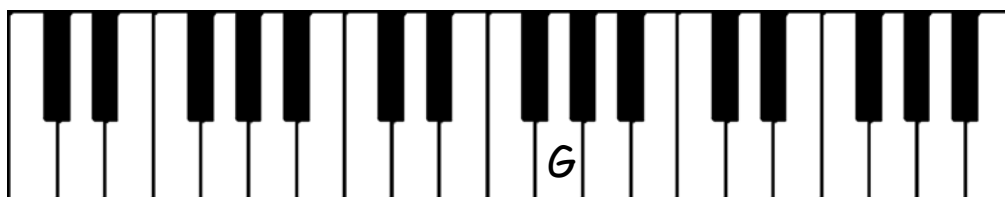


OK, let's learn another note, the note G.

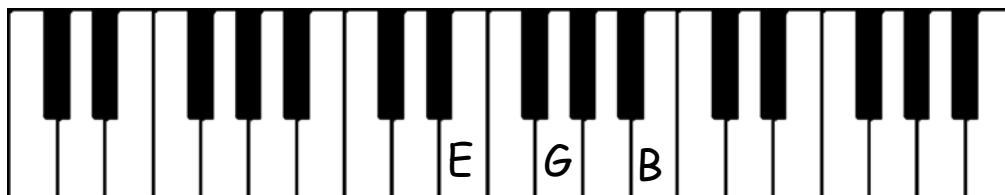
The note G is the second line on the staff. It's between B (the middle line) and E (the bottom line)



On the piano, the note G is the note just to the right of the *first* of the three black keys.



So now we've got three notes:



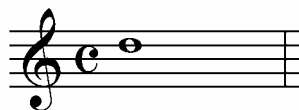
Here's an example of some music that just uses these three notes. Try playing through it.



Below you see three **measures** of music. In the third measure, all three notes are played at the same time. They make up a **chord**. A chord is when a group of notes are played at the same time.



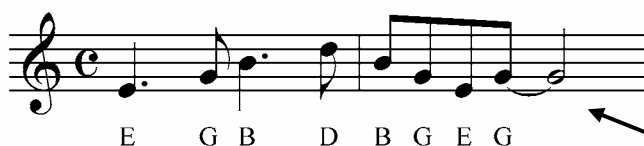
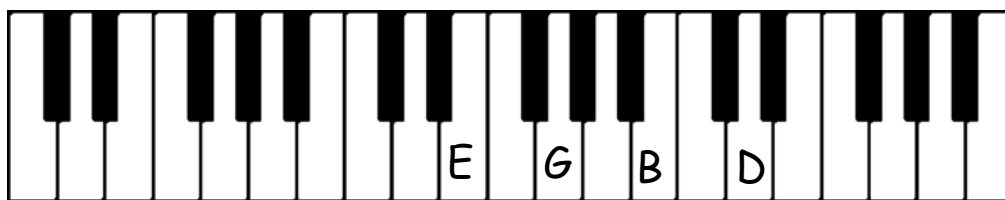
OK, now let's add a fourth note, the note D. The note D sits on the line just above the middle of the staff. Or you could say it sits on the second line from the top.



On the piano, the note D is the note just to the right of the *first* of the *two* black keys.



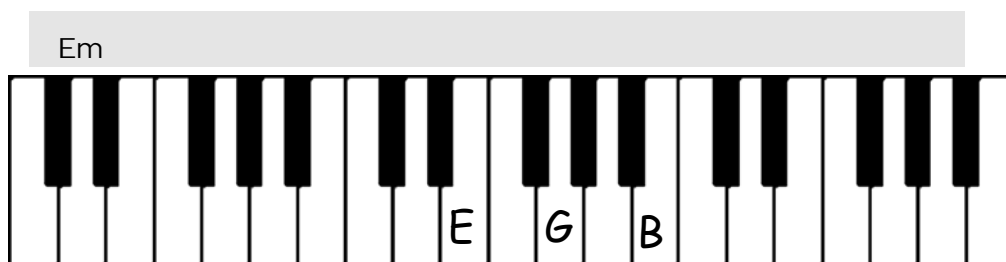
This D the highest note we've learned so far. It will be the farthest right on the keyboard.



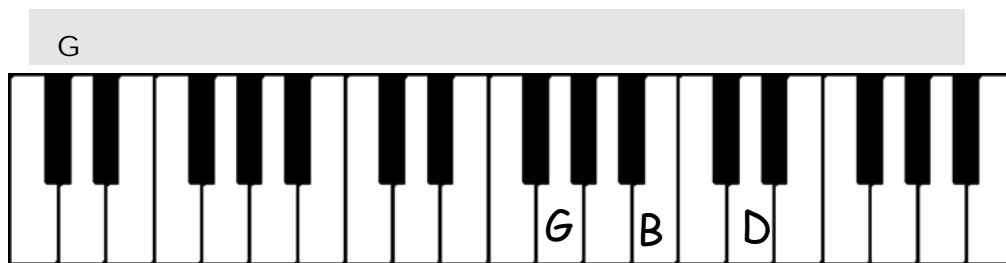
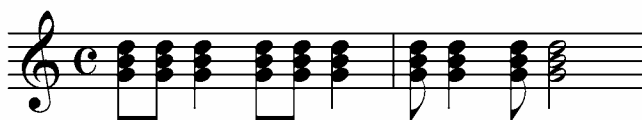
When two notes are tied together, you only play the first one.



There two very common chords that are made from the notes we've learned so far. The first is the chord **E minor**. It has the notes, E, G and B in it:

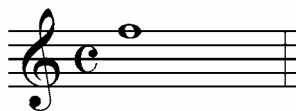


The next chord is the chord **G**. The G chord uses the notes G, B and D.



You'll notice that the G chord takes up the **three middle lines** of the staff.

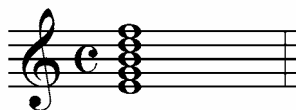
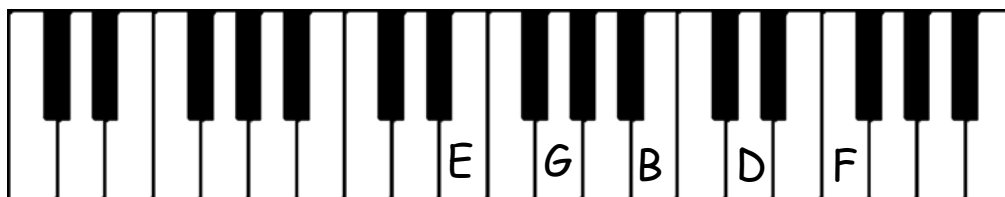
Now just to be complete, let's learn the last line on the staff. It's the note F. It's ironic that the note F comes up on top? You'd think you'd get an F on bottom!



On the piano, the note F is just to the *left* of the three black keys.



So now we have all five lines of the staff:

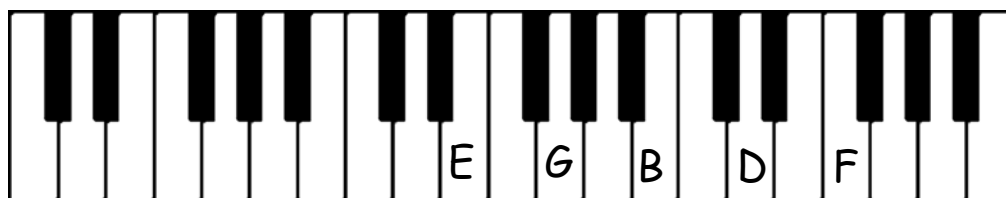


There's a mnemonic trick that's often taught to learn these notes: "Every good boy does fine".

- Just remember, the middle line is B (boy).
- The top line is F (fine).
- The bottom line is E (every).
- The second-to-bottom line is G (good).
- And the second-to-top line is D (does).

## Drill for the lines of the staff

Practice reading. I've given you two very helpful training wheels: The notes are written in for you, and I've put a diagram of the notes on the piano on the same page!



Musical notation for the first line of the drill, starting with a treble clef and a common time signature. The notes are G, B, D, F, F, D, B, G, D, B, G, E, G, E, G, B.

Musical notation for the second line of the drill, starting with a treble clef and a common time signature. The notes are D, F, D, D, F, D, D, B, G, D, B, G, E, G, B, E, G, B, G, B, D, G, B, D.

Musical notation for the third line of the drill, starting with a treble clef and a common time signature. The notes are B, D, F, B, D, F, D, D, D, B, G, B, G, B, B, D, B, D, B, D, E, G, E, G, G, B, G, B, G, B.

Musical notation for the fourth line of the drill, starting with a treble clef and a common time signature. The notes are F, F, F, F, F, F, F, D, D, B, G, G, G, E, G, B, G, B, D, F, D, D, D, D, D, D, D, B, B, G, E, E, E.

Musical notation for the fifth line of the drill, starting with a treble clef and a common time signature. The notes are F, D, B, D, G, B, E, G, G.

