

The Spaces of the Treble Clef

Clef

Let's FACE the music . . .

When you read, you will want to use a mix of knowledge and “figuring out”. For example, can you figure out what the mystery note below is? Notice that the note just before it is an E – and it’s on a line. The mystery note is on the next line. So if you remember the order of the lines we’ve learned, you’ll know what note that is.



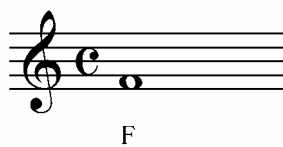
It’s the note G. The same principle will come in handy with learning the spaces of the treble clef.

For example if you know that the first line is E and the next line is G, what note will sit in the space in between?



To figure this out, just use the alphabet. A B C D E **F** G.

So the first space on the treble clef is the note F.

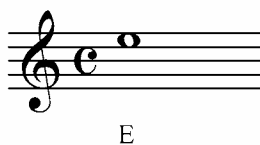


What note would come on the space between D and F?

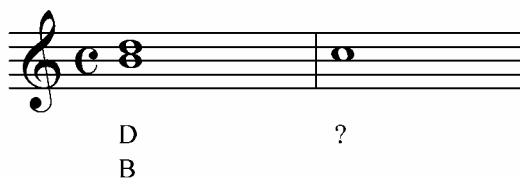


Again, use the Alphabet. A B C D E F.

So the mystery note here is the note E.

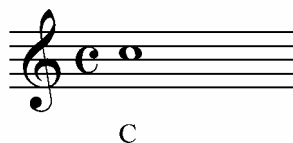


OK, how about between the notes B and D?



Again, use the Alphabet. A B C D.

So the mystery note here is the note C.



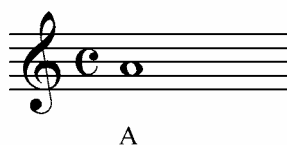
Using context like this is a little tricky if you want to find the note between G and B.



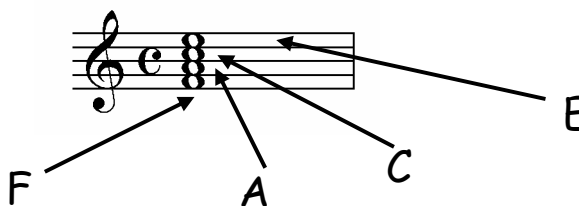
This is because the musical alphabet only goes to G, and then it repeats:

ABCDEF G | ABCDEF G | ABCDEF G | ABCDEF G | etc.

So the note between G and B is A!



So here are the lines of the staff:



They spell out the word “face”.

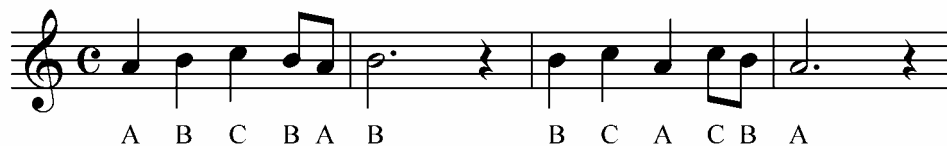
Now let’s learn these notes on the piano. Remember, this is the note B?



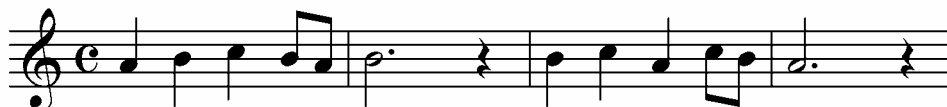
If you go to the two white keys on either side, you’ll get the notes A and C respectively.



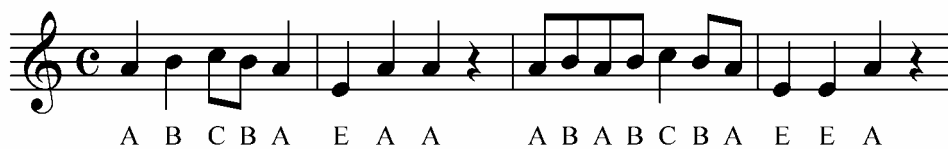
Here's a little exercise to practice these three notes:



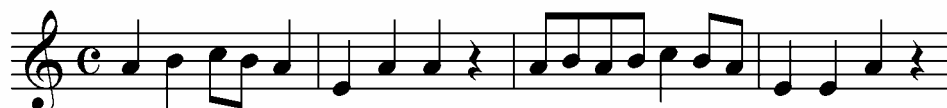
Now try without the notes written in:



Now let's add the note E for the next little exercise:



Now try this example without the notes written in:



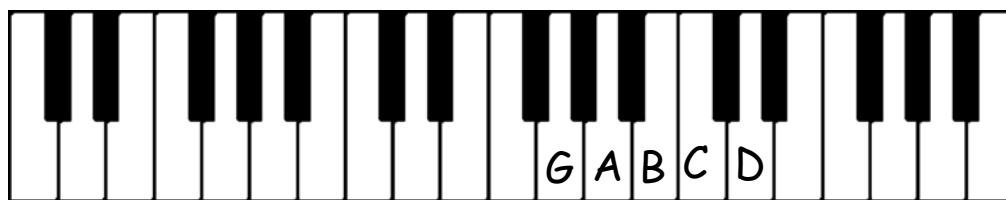
So, A and C fill the two middle spaces of the staff:



We can now play the first five notes in the key of G. The Key of G is written by putting on sharp on the top line right after the squiggly, cursive G.



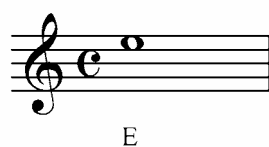
This one sharp on the top line (F) means that we're in the key of G.



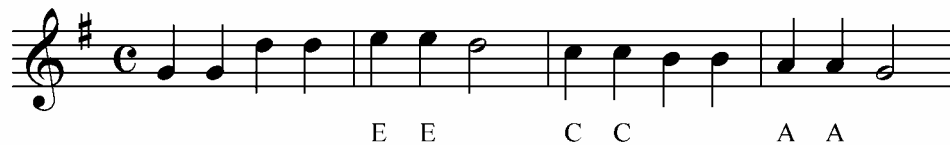
OK, now try reading this passage. You can cheat by looking at the two diagrams above.



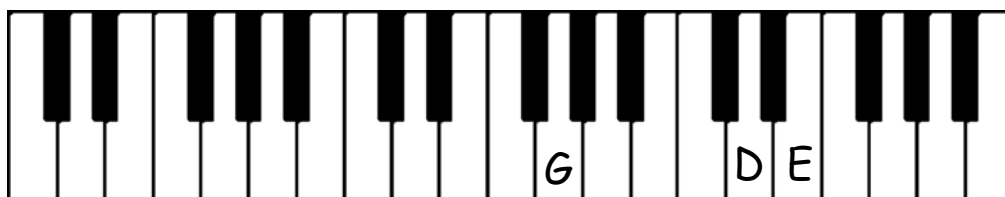
Now let's practice the top space on the staff. It's the note E:



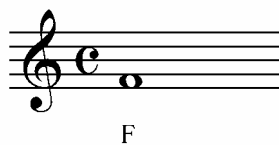
E is the sixth scale degree in the key of G. You need it in order to play “Twinkle, twinkle, little star”. Here are the first four measures. I’ve written in the spaces, but you should know the lines by now!



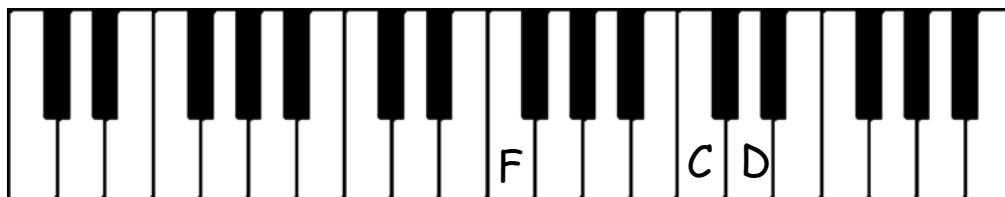
The first two measures will use these three notes.



Now let’s practice the bottom space of the staff. It’s the note F:



If you play “Twinkle, Twinkle” in the key of F, you’ll use these three notes for the first two measures:

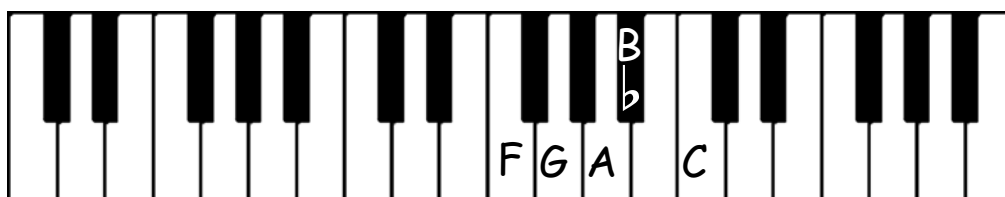


In the third measure, you have to use a flatted note. When a note is flatted, it goes to the black key just to the left on the piano from the original note.

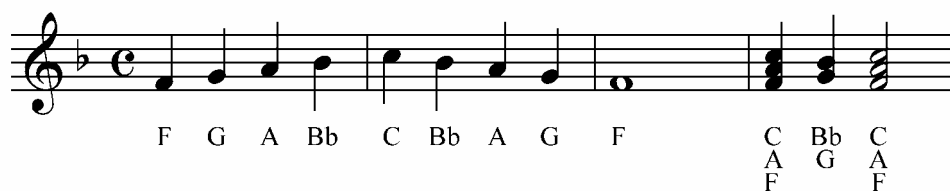
So the note “B flat” is the right-most of the three black keys:



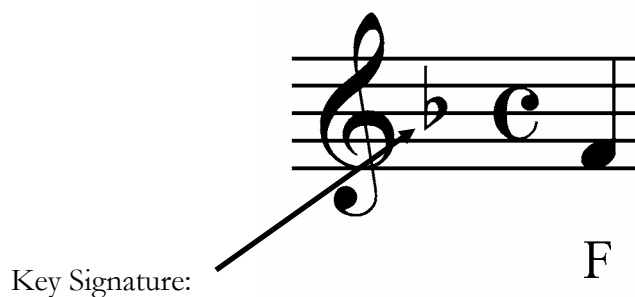
Here are the first five notes in the key of F:



Here they are on the staff:



You’ll notice that B and Bb flat look exactly the same. The only way to know them apart is by the **key signature**. That’s the little symbol just after the clef:



In the key of F, there is one flat symbol placed on the middle line (B). This means that instead of B, every time a note sits on the middle line in a piece of music, it will play the key Bb instead of B.

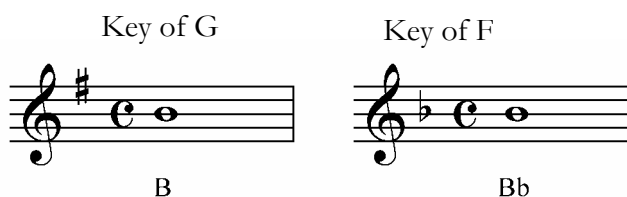
The middle line in the key of G



The middle line in the key of F



In the Key of G, this middle line will be B, in the key of F it will be Bb.



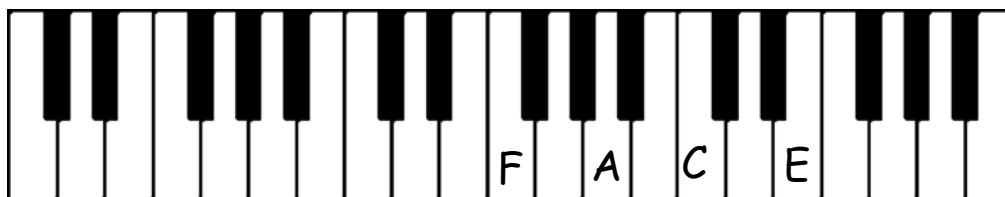
Here's "Twinkle, Twinkle" again in the key of F. Notice how the middle line is Bb instead of B:



Now here it is again in the key of G. Notice how the middle line is now B:



OK, now let's just practice the spaces:



Now let's practice mixing the spaces and the lines:

